

ERITAGE

APRESENTA

# METAMORPHOSIS

11 . October . 2023

04 . February . 2024

David Shillinglaw (UK)

Expanded Eye (UK)

Joana Gomes (PT)

Kwame Sousa (ST)

Lauren dela Roche (US)

Lisette van Hoogenhuyze (NL)

Thiago Molon (BR)

Rua das Janelas verdes, 128 B - Lisboa

[www.eritageartprojects.com](http://www.eritageartprojects.com) :: [hello@eritageartprojects.com](mailto:hello@eritageartprojects.com) :: apoio: Ponto das Artes

**Omni**  
KABO KOMBUCHA

# ERITAGE

A ERITAGE situa-se no centro da capital Portuguesa, em frente ao Museu Nacional de Arte Antiga (MNAА). Nosso objetivo é criar um espaço experimental aberto ao diálogo transcultural em busca de novos formatos e processos criativos.

Desta forma, desenvolvemos projectos artísticos que promovam experiências capazes de dissolver as fronteiras entre o artista e o público, entre a obra e o espectador, com propósito de estimular uma nova percepção ética, de participação, coletividade, e mudança.



ERITAGE is located in the Portuguese capital, in front of MNAА (National Museum of Ancient Art), inspiring us to create a space open to intercultural dialogue in search of new formats and creative processes.

Therefore, we develop artistic projects in order to promote experiences capable of dissolving the boundaries between the artist and the public, between the work and the spectator, with the purpose of stimulating a new ethical perception, of participation, collectivity, and change.

Direção: João Cavalcanti

Design: Felipe Cantieri

Fotografia: Bruno Contin

Apoio: Ponto das Artes e Ümmi Kombucha

Agradecimentos: Zuzanna Suliga, Eryk Szkudlarz e Carol Martins

# METAMORPHOSIS

Welcome to “Metamorphosis,” an exploration of transformation that transcends the boundaries of time, culture and individuality. This exhibition unites the works of seven artists from around the globe under the common thread of textiles.

As we embark on this immersive journey, we invite you to transcend the familiar, open your mind to the unknown and embrace the evolution of consciousness that lies at the core of the invisible aspects of a social history woven into the daily life of our society. “Metamorphosis” is more than just an exhibition; it is an opportunity to connect with the profound universal energy that binds us all.

Change is the only constant. It occurs at the intersection of contrasting elements where the known and unknown converge, giving birth to unique qualities and transforming the initial components into diverse, novel entities.

Textiles possess a remarkable ability to function as visual language, allowing us to navigate the intricate tapestry of human subjectivity. Just as words convey stories, textiles convey emotions, experiences and the complexities of our inner worlds. They are not mere fabrics but intricately woven narratives.

We confront the enduring impact of colonization and globalization through the lens of textiles, “Metamorphosis” challenges us to unravel the complex legacy of these historical forces. Just as textiles adapt to shifting circumstances we can reimagine our role in shaping a sustainable and harmonious future.

Within the diverse fabrics representing cultures and societies from Europe to the islands of Africa, South and North America, we immerse ourselves in the uninterrupted fabric of the universe.

Through the creations of these seven artists—David Shillinglaw, Expanded Eye, Joana Gomes, Kwame Sousa, Lauren dela Roche, Lisette Van Hoogenhuyze, and Thiago Molon—you will witness the sophisticated interplay between individual and collective consciousness. Each artist’s work encapsulates the spirit of our transformative age urging us to examine the multifaceted threads that shape our existence.

**DAVID SHILLINGLAW** The British artist is renowned for exploring themes around the “mind human condition” – he works in this conflicted and messy space, which ultimately relates to a relentless need for control within a disordered world. Contradictory feelings of freedom and confinement, safety and claustrophobia, coexist within his works. Shillinglaw’s transformative prowess lies in his unique ability to unite disparate components, breathing life into them and birthing entirely new entities. His art, as presented in “Metamorphosis”, serves as a profound exploration of the intricate tapestry of human existence. He brings together components that did not previously exist in a common whole, which adds power to the transformative potential of these works. The artist created the presented pieces from old ones he destroyed. For his portrait series, each of these entities carry a distinct and meaningful identity. In doing so, they challenge the rigid confines of gender, personality, and identity, inviting viewers to embrace a more open-minded and compassionate perspective on humanity.

The artist duo **EXPANDED EYE**, formed by the London couple Jade Tomlinson and Kevin James, stands as a dynamic force in the international contemporary art scene. Their oeuvre seamlessly traverses diverse mediums, showcasing an artistic language that is both unique and adaptable. At its core, their art is a fusion of human elements drawn from everyday life, meticulously deconstructed into fundamental components, and masterfully reassembled into singular, evocative ideas. “Metamorphosis” serves as the central and intrinsic principle guiding their creative process. For Expanded Eye, art is a transcendental journey that defies boundaries and embraces transformation. It represents a quest for self-discovery and authenticity, where the act of creation begets life itself. Expanded Eye’s textile works represent a testament to their unwavering commitment to innovation and their ability to transcend artistic boundaries.

**JOANA GOMES** delves into the evolving role of women in society, offering a poignant representation through her art. For Metamorphosis exhibition her work features a sentimental reflection inspired by a Japanese film frame, notably “The Only Son” by Yasujiro Ozu, which she portrays on two overlapping fabrics. This composition creates an impression of the passage of time, imbuing her work with a sense of fuzziness and blurred visibility. Joana utilizes deliberate gaps within her pieces to mark time, symbolizing the breaking of patterns and repetitions. Her approach is akin to a deconstructed narrative, akin to an archaeology of memory where real memories merge with symbols from the realm of imagination and collective experiences. Joana is consistently engaged in a profound exploration of human relationships and her interconnectedness with the universe.

**KWAME SOUSA** born in São Tomé and Príncipe, masterfully weaves a body of work that bridges the gap between individual expression and cultural archetypes. In his exploration of various media, styles, and techniques, Kwame’s artistic language emerges as a vivid reflection of transformation—both personal and societal. As we step into the present moment, we find ourselves amidst an African renaissance—marked by pride, optimism, and renewed hope across the continent. Kwame Sousa’s first textile pieces, presented in this exhibition, invite us to view this emerging Africa through the lens of his ancestors. These textile artworks become vessels for the age-old tradition of storytelling, carrying within them the narrative of transformation.

**LAUREN DELA ROCHE** weaves her personal psychological experiences into a tapestry of creativity, giving birth to imaginative landscapes that mirror the depths of her inner psyche. Her artwork becomes a vessel for her memories and life’s twists and turns, but it also extends an invitation to viewers, offering a glimpse into their own universal anxieties. For this exhibition, Lauren presents a remarkable piece crafted from feedback cotton fabrics dating back to the early 20th century, originally used in agriculture. Her work, titled “Déjà Vu,” encapsulates imaginative metaphors with a strong feminine essence at its core. It embodies a dualistic interplay of characters, infused with inspiration from punk poetry, Murakami’s literature, and a fusion of domesticity and dreamworlds.

**LISETTE VAN HOOGENHUYZE** is a multimedia artist living and working between Lisbon and Amsterdam. Her paintings, sculptures and textile installations merge feminine figures, natural motifs and ageless symbols in a critical examination of identity, collective memory and language. Masterfully weaves influences from Greek mythology and storytelling into her creations. Her oeuvre serves as an evocative exploration of ancient myths, giving life to forms imbued with profound symbolism through a contemporary perspective. Themes of femininity and metamorphosis resonate strongly throughout her body of work. Her artistic journey is marked by an ongoing process of learning, a continuous quest to encapsulate the cultures and symbolisms passed down through generations. Through her creations, she aims to convey the timeless essence of life itself.

**THIAGO MOLON**, is a multidisciplinary artist born and raised in Vidigal, the iconic favela of Rio de Janeiro, Brazil. Thiago Molon’s art serves as a bridge between the individual and collective consciousness, a journey that originates in his singular universe. The Vidigal favela plays a central role in shaping the artist’s poetic, aesthetic, and political identity. Essentially, his research unveils the intricate interplay of art, history, geopolitics, and local culture, acting as a catalyst for societal reflection and transformation. In the “Metamorphosis” exhibition, Molon’s choice to use canvas truck material, which originally traversed countless kilometres of Brazilian territory before reaching his hands, becomes even more emblematic in this context. It symbolizes Brazil’s dependence on trucks, a theme explored by the artist in works that evoke a reimagined fruit stall, inspired by the vibrant street fairs where diverse social classes converge.

The seven artists’ creations compel us to peer beyond the surface, to journey deep into our being. As you traverse “Metamorphosis” let the textiles guide you, much like the celestial navigation of ancient mariners—a voyage of self-discovery, connection and transformation. We invite you to become an integral part of this ever-evolving narrative where change is not a choice but a magnificent constant.

# ERITAGE

## METAMORPHOSIS

David Shillinglaw (UK), Expanded Eye (UK), Joana Gomes (PT), Kwame Sousa (ST), Lauren dela Roche (US), Lisette van Hoogenhuyze (NL), Thiago Molon (BR)

o "Metamorphosis", uma exploração da transformação que transcende os limites do tempo, da cultura e da individualidade. Esta exposição reúne obras de sete artistas de diferentes continentes sob o fio condutor dos têxteis.

Embora esta viagem imersiva, convidamos-vos a extrair a familiaridade do desconhecido e abraçar a evolução da consciência que reside nos aspectos invisíveis de uma história social tecida pela vida cotidiana da nossa sociedade. "Metamorphosis" é mais do que apenas uma exposição; é uma oportunidade para nos conectarmos com a profunda energia universal que nos une a todos.

A mudança é a única constante. Ocorre na interseção de elementos contrastantes onde o conhecido e o desconhecido convergem, dando origem a qualidades únicas e inesperadas.

Os têxteis possuem uma notável capacidade de funcionar como linguagem visual, permitindo-nos navegar na intricada tapeçaria da subjetividade humana. Tal como as histórias, os têxteis transmitem emoções, experiências e a riqueza dos nossos mundos interiores. Não são meros tecidos, mas narrativas entrelaçadas.

Exploramos o impacto duradouro da colonização e da globalização através da lente dos têxteis. "Metamorphosis" desafia-nos a desvendar a complexa herança destas forças. Assim como os têxteis se adaptam às circunstâncias em transição, nós podemos explorar o nosso papel na formação de um futuro sustentável e harmonioso.

Os têxteis representam culturas e sociedades da Europa até às ilhas de América do Sul e do Norte, mergulhamos no ininterrupto tecido do universo.

As criações destes sete artistas (David Shillinglaw, Expanded Eye, Joana Gomes, Kwame Sousa, Lauren dela Roche, Lisette Van Hoogenhuyze, e Thiago Molon), oferecem uma sofisticada interação entre consciência individual e coletiva. O fio de cada artista encapsula o espírito desta era transformadora, convidando-nos a abraçar os fios multifacetados que dão forma à nossa existência.

As obras obrigam-nos a olhar além da superfície. Ao viajar profundamente na nossa história, ao atravessarmos "Metamorphosis", devemos nos guiar pelos têxteis, assim como a navegação astronómica dos antigos marinheiros: uma viagem de descoberta, conexão e transformação. Convidamos-vos a tornarem-se parte desta narrativa em permanente evolução, onde a mudança não é uma escolha, mas sim uma constante.

Welcome to "Metamorphosis", an exploration of transformation that transcends the boundaries of time, culture, and individuality. This exhibition unites the work of seven artists from around the globe under the common thread of textiles.

As we embark on this immersive journey, we invite you to extract the familiarity from the unknown and embrace the evolution of consciousness that resides in the invisible aspects of a social history woven into the fabric of our society. "Metamorphosis" is more than just an exhibition; it is an opportunity to connect with the profound universal energy that binds us all.

Change is the only constant. It occurs at the intersection of contrasting elements where the known and unknown converge, giving birth to unique qualities and transforming the world into diverse, novel entities.

Textiles possess a remarkable ability to function as visual language, allowing us to navigate the intricate tapestry of human subjectivity. Just as stories convey emotions, experiences and the complexities of our inner worlds, they do not just tell but intricately woven narratives.

We confront the enduring impact of colonization and globalization through the lens of textiles. "Metamorphosis" challenges us to uncover the complex legacy of these forces. Just as textiles adapt to shifting circumstances, we can envision our role in shaping a sustainable and harmonious future.

Within the diverse fabrics representing cultures and societies from Europe to the corners of Africa, South and North America, we immerse ourselves in the uninterrupted fabric of the universe.

Through the creations of these seven artists—David Shillinglaw, Expanded Eye, Joana Gomes, Kwame Sousa, Lauren dela Roche, Lisette Van Hoogenhuyze, and Thiago Molon—you will witness the sophisticated interplay between individual and collective consciousness. Each artist's work encapsulates the spirit of our transformative age, urging us to embrace the multifaceted threads that shape our existence.

Their creations compel us to peer beyond the surface, to journey deep into our being. As you traverse "Metamorphosis" let the textiles guide you, much like the celestial navigation of ancient mariners—a voyage of self-discovery, connection and transformation. We invite you to become an integral part of this ever-evolving narrative where change is not a choice but a magnificent constant.

Apoio: Porto das Artes  
Produção: ERITAGE  
www.heritageartprojects.com



# METAMORPHOSIS

Welcome to "Metamorphosis," an exploration of transformation that transcends the boundaries of time, culture and individuality. This exhibition unites the works of seven artists from around the globe under the common thread of textiles.

As we embark on this immersive journey, we invite you to transcend the familiar, open your mind to the unknown and embrace the evolution of consciousness that lies at the core of the invisible aspects of a social history woven into the daily life of our society. "Metamorphosis" is more than just an exhibition; it is an opportunity to connect with the profound universal energy that binds us all.

Change is the only constant. It occurs at the intersection of contrasting elements where the known and unknown converge, giving birth to unique qualities and transforming the initial components into diverse, novel entities.

Textiles possess a remarkable ability to function as visual language, allowing us to navigate the intricate tapestry of human subjectivity. Just as words convey stories, textiles convey emotions, experiences and the complexities of our inner worlds. They are not mere fabrics but intricately woven narratives.

We confront the enduring impact of colonization and globalization through the lens of textiles, "Metamorphosis" challenges us to unravel the complex legacy of these historical forces. Just as textiles adapt to shifting circumstances we can reimagine our role in shaping a sustainable and harmonious future.

Within the diverse fabrics representing cultures and societies from Europe to the islands of Africa, South and North America, we immerse ourselves in the uninterrupted fabric of the universe.

Through the creations of these seven artists—David Shillinglaw, Expanded Eye, Joana Gomes, Kwame Sousa, Lauren dela Roche, Lisette Van Hoogenhuyze, and Thiago Molon—you will witness the sophisticated interplay between individual and collective consciousness. Each artist's work encapsulates the spirit of our transformative age urging us to examine the multifaceted threads that shape our existence.

**DAVID SHILLINGLAW** The British artist is renowned for exploring themes around the "mind human condition" – he works in this conflicted and messy space, which ultimately relates to a relentless need for control within a disordered world. Contradictory feelings of freedom and confinement, safety and claustrophobia, coexist within his works. Shillinglaw's transformative prowess lies in his unique ability to unite disparate components, breathing life into them and birthing entirely new entities. His art, as presented in "Metamorphosis", serves as a profound exploration of the intricate tapestry of human existence. He brings together components that did not previously exist in a common whole, which adds power to the transformative potential of these works. The artist created the presented pieces from old ones he destroyed. For his portrait series, each of these entities carry a distinct and meaningful identity. In doing so, they challenge the rigid confines of gender, personality, and identity, inviting viewers to embrace a more open-minded and compassionate perspective on humanity.

The artist duo **EXPANDED EYE**, formed by the London couple Jade Tomlinson and Kevin James, stands as a dynamic force in the international contemporary art scene. Their oeuvre seamlessly traverses diverse mediums, showcasing an artistic language that is both unique and adaptable. At its core, their art is a fusion of human elements drawn from everyday life, meticulously deconstructed into fundamental components, and masterfully reassembled into singular, evocative ideas. "Metamorphosis" serves as the central and intrinsic principle guiding their creative process. For Expanded Eye, art is a transcendental journey that defies boundaries and embraces transformation. It represents a quest for self-discovery and authenticity, where the act of creation begets life itself. Expanded Eye's textile works represent a testament to their unwavering commitment to innovation and their ability to transcend artistic boundaries.

**JOANA GOMES** delves into the evolving role of women in society, offering a poignant representation through her art. For Metamorphosis exhibition her work features a sentimental reflection inspired by a Japanese film frame, notably "The Only Son" by Yasujiro Ozu, which she portrays on two overlapping fabrics. This composition creates an impression of the passage of time, imbuing her work with a sense of fuzziness and blurred visibility. Joana utilizes deliberate gaps within her pieces to mark time, symbolizing the breaking of patterns and repetitions. Her approach is akin to a deconstructed narrative, akin to an archaeology of memory where real memories merge with symbols from the realm of imagination and collective experiences. Joana is consistently engaged in a profound exploration of human relationships and her interconnectedness with the universe.

**KWAME SOUSA** born in São Tomé and Príncipe, masterfully weaves a body of work that bridges the gap between individual expression and cultural archetypes. In his exploration of various media, styles, and techniques, Kwame's artistic language emerges as a vivid reflection of transformation—both personal and societal. As we step into the present moment, we find ourselves amidst an African renaissance—marked by pride, optimism, and renewed hope across the continent. Kwame Sousa's first textile pieces, presented in this exhibition, invite us to view this emerging Africa through the lens of his ancestors. These textile artworks become vessels for the age-old tradition of storytelling, carrying within them the narrative of transformation.

**LAUREN DELA ROCHE** weaves her personal psychological experiences into a tapestry of creativity, giving birth to imaginative landscapes that mirror the depths of her inner psyche. Her artwork becomes a vessel for her memories and life's twists and turns, but it also extends an invitation to viewers, offering a glimpse into their own universal anxieties. For this exhibition, Lauren presents a remarkable piece crafted from feedback cotton fabrics dating back to the early 20th century, originally used in agriculture. Her work, titled "Déjà Vu," encapsulates imaginative metaphors with a strong feminine essence at its core. It embodies a dualistic interplay of characters, infused with inspiration from punk poetry, Murakami's literature, and a fusion of domesticity and dreamworlds.

**LISETTE VAN HOOGENHUYZE** is a multimedia artist living and working between Lisbon and Amsterdam. Her paintings, sculptures and textile installations merge feminine figures, natural motifs and ageless symbols in a critical examination of identity, collective memory and language. Masterfully weaves influences from Greek mythology and storytelling into her creations. Her oeuvre serves as an evocative exploration of ancient myths, giving life to forms imbued with profound symbolism through a contemporary perspective. Themes of femininity and metamorphosis resonate strongly throughout her body of work. Her artistic journey is marked by an ongoing process of learning, a continuous quest to encapsulate the cultures and symbolisms passed down through generations. Through her creations, she aims to convey the timeless essence of life itself.

**THIAGO MOLON**, is a multidisciplinary artist born and raised in Vidigal, the iconic favela of Rio de Janeiro, Brazil. Thiago Molon's art serves as a bridge between the individual and collective consciousness, a journey that originates in his singular universe. The Vidigal favela plays a central role in shaping the artist's poetic, aesthetic, and political identity. Essentially, his research unveils the intricate interplay of art, history, geopolitics, and local culture, acting as a catalyst for societal reflection and transformation. In the "Metamorphosis" exhibition, Molon's choice to use canvas truck material, which originally traversed countless kilometres of Brazilian territory before reaching his hands, becomes even more emblematic in this context. It symbolizes Brazil's dependence on trucks, a theme explored by the artist in works that evoke a reimagined fruit stall, inspired by the vibrant street fairs where diverse social classes converge.

The seven artists' creations compel us to peer beyond the surface, to journey deep into our being. As you traverse "Metamorphosis" let the textiles guide you, much like the celestial navigation of ancient mariners—a voyage of self-discovery, connection and transformation. We invite you to become an integral part of this ever-evolving narrative where change is not a choice but a magnificent constant.

ERITAGE



**KWAME SOUSA**

PAGE 16

**EXPANDED EYE**

PAGE 24

**DAVID SHILLINGLAW**

PAGE 36

**LAUREN DELA ROCHE**

PAGE 56

**THIAGO MOLON**

PAGE 62

**LISETTE VAN HOOGENHUYZE**

PAGE 74

**JOANA GOMES**

PAGE 80



ERITAGE





# KWAME SOUSA



Kwame Sousa, nascido em 1980 em São Tomé e Príncipe, tece magistralmente um corpo de trabalho que colmata a lacuna entre a expressão individual e os arquétipos culturais. Na sua exploração de vários meios, estilos e técnicas, a linguagem artística de Kwame emerge como um vívido reflexo da transformação, tanto pessoal quanto social. O seu trabalho, apresentado nesta exposição, convida-nos a mergulhar nas técnicas ancestrais profundas que nos empoderam a transcender as nossas limitações, entrar num reino liminar atemporal e abraçar a transformação consciente.

A arte de Kwame Sousa ressoa com as tradições de São Tomé e Príncipe, onde as máscaras e os trajes rituais desempenham um papel fundamental em cerimónias que elevam os indivíduos para além do seu eu mundano. As suas criações, caracterizadas por rostos ornamentados com cores vibrantes, evocam o espírito dessas máscaras, recordando a rica herança cultural da sua terra natal. Os tons deslumbrantes e os padrões intrincados são uma reminiscência do vestuário africano, servindo como um testemunho da sua conexão profunda com as suas origens.

Ao entrar no momento presente, encontramos-nos dentro dum renascimento africano, marcado por orgulho, otimismo e esperança renovada em todo o continente. As primeiras peças têxteis de Kwame Sousa, apresentadas nesta exposição, convidam-nos a ver esta África emergente através das lentes dos seus antepassados. Essas obras de arte têxteis tornam-se recipientes para a tradição milenar da história oral, carregando dentro deles a narrativa da transformação. Assim como os têxteis se adaptam e evoluem ao longo do tempo, refletindo a tapeçaria mutável da existência humana, também as criações de Kwame Sousa refletem o espírito dinâmico da África ao embarcar num novo capítulo da sua jornada.

## english

*Kwame Sousa, born in 1980 in São Tomé and Príncipe, masterfully weaves a body of work that bridges the gap between individual expression and cultural archetypes. In his exploration of various media, styles, and techniques, Kwame's artistic language emerges as a vivid reflection of transformation—both personal and societal. His work, showcased in the exhibition, beckons us to delve into the profound ancestral techniques that empower us to transcend our limitations, enter a timeless liminal realm, and embrace conscious transformation.*

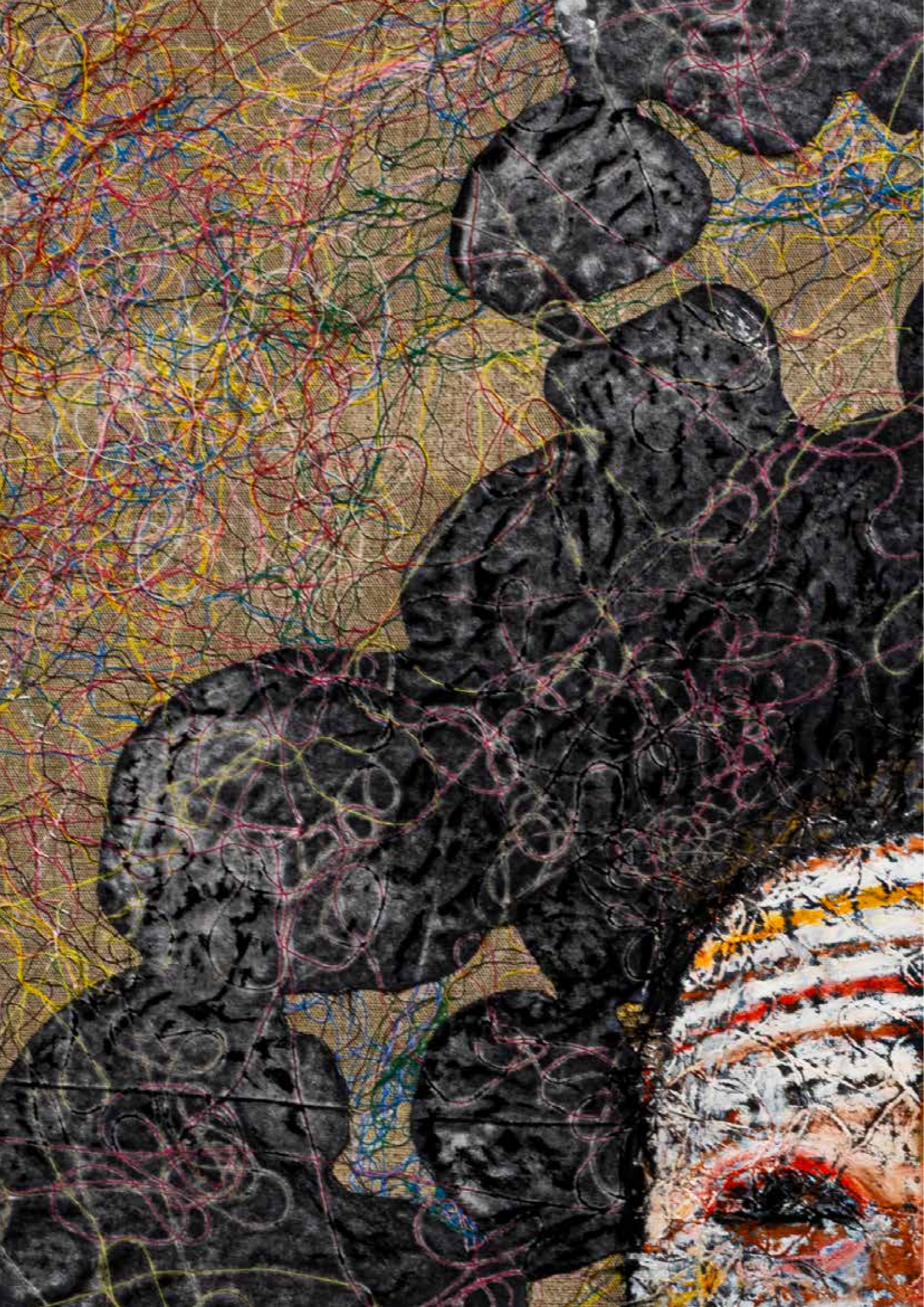
*Kwame Sousa's art resonates with the traditions of São Tomé e Príncipe, where ritual masks and costumes play a pivotal role in ceremonies that elevate individuals beyond their mundane selves. His creations, characterized by faces adorned with vibrant colors, evoke the spirit of these masks, harking back to the rich cultural heritage of his homeland. The dazzling hues and intricate patterns are reminiscent of African clothing, serving as a testament to his deep-rooted connection with his origins.*

*As we step into the present moment, we find ourselves amidst an African renaissance—marked by pride, optimism, and renewed hope across the continent. Kwame Sousa's first textile pieces, presented in this exhibition, invite us to view this emerging Africa through the lens of his ancestors. These textile artworks become vessels for the age-old tradition of storytelling, carrying within them the narrative of transformation. Just as textiles adapt and evolve over time, reflecting the shifting tapestry of human existence, Kwame Sousa's creations mirror the dynamic spirit of Africa as it embarks on a new chapter of its journey.*



Kwame Sousa  
Series: Reino Angolar :: Cerimônia de Acasalamento I :: 2023  
oil pastel and fabric on raw linen  
152 cm x 144 cm :: €7.000





Kwame Sousa  
Series: Reino Angolar :: Cerimônia de Acasalamento II :: 2023  
oil pastel and fabric on raw linen  
98 cm x 102 cm :: €3.000

## EXPANDED EYE

O duo artístico Expanded Eye, formado pela dupla londrina Jade Tomlinson (b.1985) e Kevin James b.1984), destaca-se como uma força dinâmica no cenário internacional da arte contemporânea. A sua obra espalha-se sem esforço por diversos meios, apresentando uma linguagem artística que é única e adaptável. Na sua essência, a sua arte é uma fusão de elementos humanos extraídos da vida cotidiana, meticulosamente desconstruídos em componentes fundamentais e magistralmente remontados em ideias singulares e evocativas.

A “Metamorphosis” serve como princípio central e intrínseco que guia o seu processo criativo. Para Expanded Eye, a arte é uma jornada transcendental que desafia os limites e abraça a transformação. Representa uma busca pela auto-descoberta e autenticidade, onde o ato da criação gera a própria vida. Essa profunda sensibilidade ao seu processo criativo, aliada a um compromisso inabalável com as complexidades narrativas, resulta em obras que exalam uma qualidade etérea. Estas criações são meticulosamente concebidas e executadas, transmitindo um entusiasmo que excede a mera expressão verbal.

Na sua exploração da arte têxtil para a exposição “Metamorphosis”, Expanded Eye revela um capítulo inovador da sua jornada artística. Eles empregam uma abordagem moderna e sofisticada para criar composições intrincadas a partir de peças de tecido interconectadas. O seu domínio de várias técnicas e a sua hábil manipulação e justaposição de materiais permite-lhes construir narrativas complexas, retratadas em várias escalas. Essas peças, semelhantes a partes de um quebra-cabeça maior, infundem um novo significado em itens que antes eram percebidos como comuns.

As obras têxteis da Expanded Eye representam um testemunho do seu compromisso inabalável com a inovação e a sua capacidade de transcender as fronteiras artísticas. Nesta nova série, os espectadores são convidados a embarcar numa jornada num reino de poesia visual, meticulosamente concebida e materializada, onde cada peça transmite um entusiasmo que ultrapassa as limitações da linguagem.



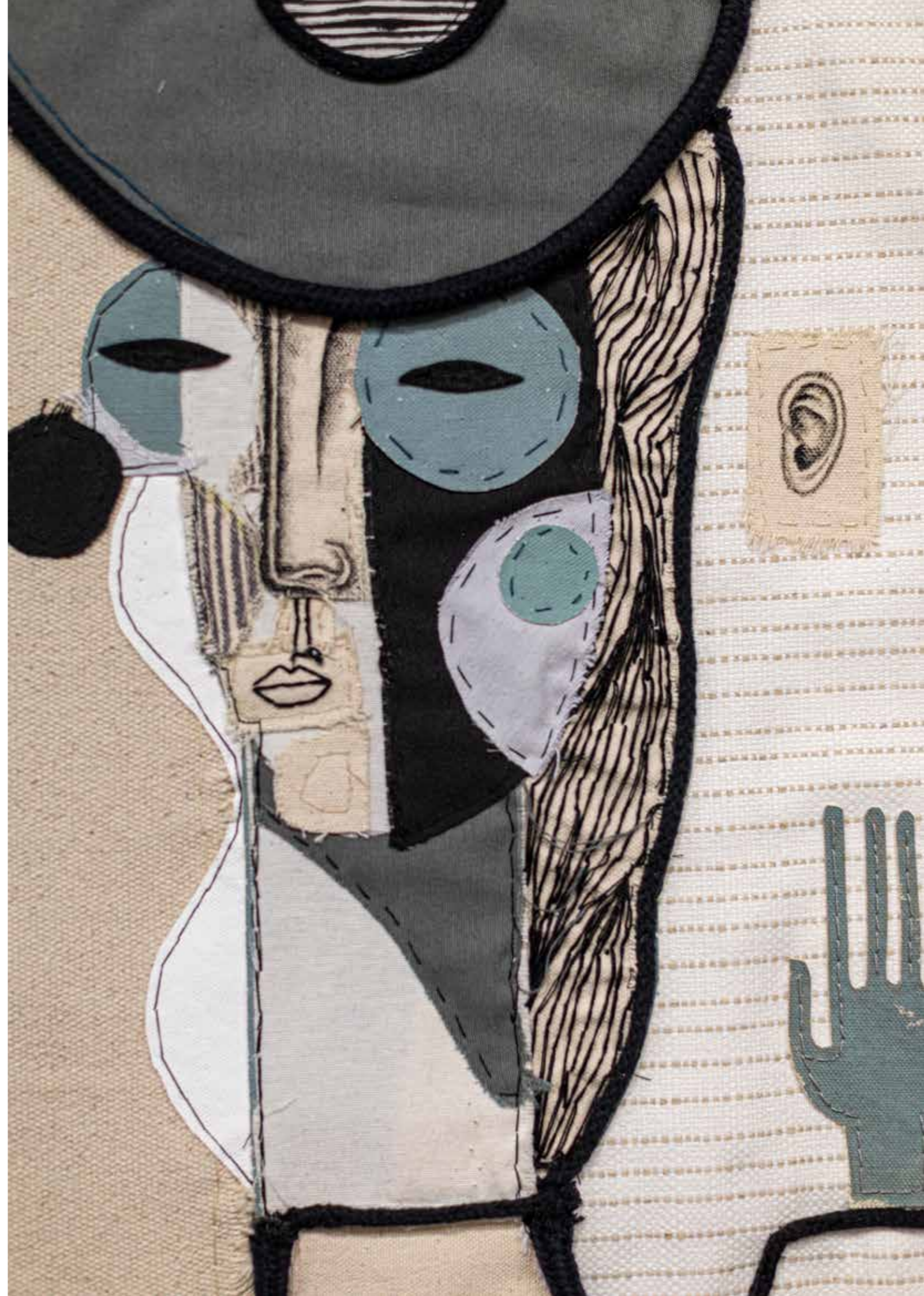
english

*The artist duo Expanded Eye, formed by the London couple Jade Tomlinson (b.1985) and Kevin James (b.1984), stands as a dynamic force in the international contemporary art scene. Their oeuvre seamlessly traverses diverse mediums, showcasing an artistic language that is both unique and adaptable. At its core, their art is a fusion of human elements drawn from everyday life, meticulously deconstructed into fundamental components, and masterfully reassembled into singular, evocative ideas.*

*“Metamorphosis” serves as the central and intrinsic principle guiding their creative process. For Expanded Eye, art is a transcendental journey that defies boundaries and embraces transformation. It represents a quest for self-discovery and authenticity, where the act of creation begets life itself. This profound sensitivity to their creative process, coupled with an unwavering commitment to narrative intricacies, results in works that exude an ethereal quality. These creations are meticulously conceived and executed, conveying an enthusiasm that exceeds mere verbal expression.*

*In their exploration of textile art for the “Metamorphosis” exhibition, Expanded Eye unveils a groundbreaking chapter in their artistic journey. They employ a modern and sophisticated approach to craft intricate compositions from interconnected fabric pieces. Their mastery of various techniques and their adept manipulation and juxtaposition of materials allow them to construct intricate narratives, portrayed at various scales. These pieces, akin to parts of a larger puzzle, infuse new meaning into items that were once perceived as ordinary.*

*Expanded Eye’s textile works represent a testament to their unwavering commitment to innovation and their ability to transcend artistic boundaries. In this new series, viewers are invited to embark on a journey into a realm of visual poetry, meticulously conceived and materialized, where each piece conveys an enthusiasm that outstrips the limitations of language.*

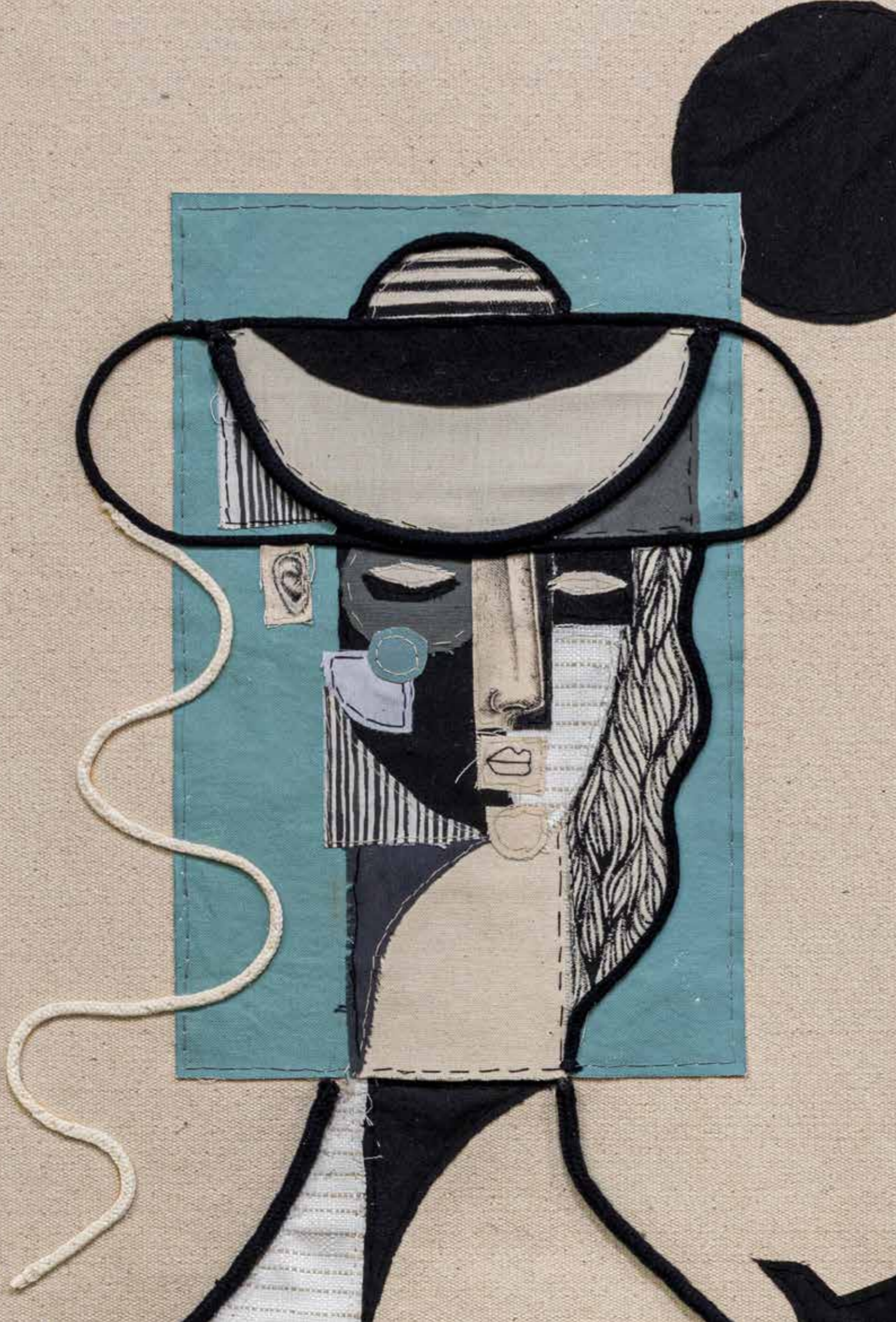




Expanded Eye  
Between Us, Beyond Us :: 2023  
textiles and acrylic on cotton canvas  
150 cm x 100 cm :: €7.500







**Expanded Eye**  
**Whispers of Stillness :: 2023**  
*textiles and acrylic on cotton canvas*  
128cm x 68 cm :: €4.500



# DAVID SHILLINGLAW



Nascido em 1982, David cresceu em Londres e se formou na Central Saint Martin's em 2002. Atualmente vive e trabalha em Margate, Reino Unido. O artista britânico é conhecido por explorar temas em torno da "condição humana mental" - ele trabalha neste espaço conflituoso e confuso, que em última análise se relaciona com uma necessidade implacável de controle dentro de um mundo desordenado. Dentro das suas obras coexistem sentimentos contraditórios de liberdade e confinamento, segurança e claustrofobia. Dentro do caos do nosso mundo, Shillinglaw discerne uma ordem cósmica que encontra expressão nas suas obras em destaque.

As suas composições artísticas, muitas vezes caracterizadas por estruturas em forma de grade e elementos segmentados, refletem a natureza multifacetada dos limites dentro das nossas vidas.

A proeza transformadora de Shillinglaw reside na sua capacidade única de unir componentes díspares, enchendo-os de vida e dando à luz entidades inteiramente novas. A sua arte, apresentada em "Metamorphosis", serve como uma exploração profunda da intrincada tapeçaria da existência humana.

Ele reúne componentes que não existiam anteriormente num todo comum, o que agrega poder ao potencial transformador dessas obras, são peças que o artista criou a partir de obras antigas que ele destruiu. Renascimento, ressurreição, criação poderosa: David Shillinglaw traz novos seres à existência.

Cada uma dessas entidades, manifestadas como rostos que irradiam com opalescência e complexidade cintilante, carrega uma identidade distinta e significativa. Assim, estas desafiam os limites rígidos de gênero, personalidade e identidade, convidando os espectadores a abraçar uma perspectiva mais aberta e compassiva sobre a humanidade.

O que distingue os retratos de David Shillinglaw é o seu afastamento das noções binárias convencionais da existência humana. Em vez disso, eles celebram a complexidade e a beleza inata de cada indivíduo, libertando-se das restrições da categorização. Dentro dos limites quadriculados das suas composições, pode-se discernir sugestões subtis sobre migração, deslocamento e a experiência da alteridade, justapostos aos conceitos de segurança e proteção. O trabalho de Shillinglaw reflete sobre a própria humanidade, levando os espectadores a contemplar a fluidez e a interconexão que definem nossa existência.

As criações intrincadas e alegres de David oferecem uma mensagem poderosa: a busca de uma versão inteiramente conhecida e 'segura' de nós mesmos, dos outros e do mundo, pode levar à estreiteza mental. A verdadeira beleza, ele sugere, está em render-se ao caos cósmico que nos envolve, confiando que por trás de tudo isso existe uma ordem requintada. Apenas mergulhando totalmente no mundo, aceitando o nosso papel como uma das suas partes precárias, em vez de seu único autor, podemos genuinamente respeitá-lo e cuidar dele. Assim como Davi, devemos deleitar-nos com as múltiplas maravilhas que este mundo apresenta, abraçando os seus mistérios sublimes com abandono selvagem.

english

Born in 1982, he grew up in London and went on to graduate from Central Saint Martin's in 2002. Currently lives and works in Margate, UK. The British artist is renowned for exploring themes around the "mind human condition" – he works in this conflicted and messy space, which ultimately relates to a relentless need for control within a disordered world. Contradictory feelings of freedom and confinement, safety and claustrophobia, coexist within his works. Within the chaos of our world, Shillinglaw discerns a cosmic order that finds expression in his featured works. His artistic compositions, often characterized by grid-like structures and segmented elements, mirror the multifaceted nature of boundaries within our lives.

Shillinglaw's transformative prowess lies in his unique ability to unite disparate components, breathing life into them and birthing entirely new entities. His art, as presented in "Metamorphosis", serves as a profound exploration of the intricate tapestry of human existence. He brings together components that did not previously exist in a common whole, which adds power to the transformative potential of these works. The artist created the presented pieces from old ones he destroyed. Rebirth, resurrection, powerful creation: David Shillinglaw brings new beings into existence.

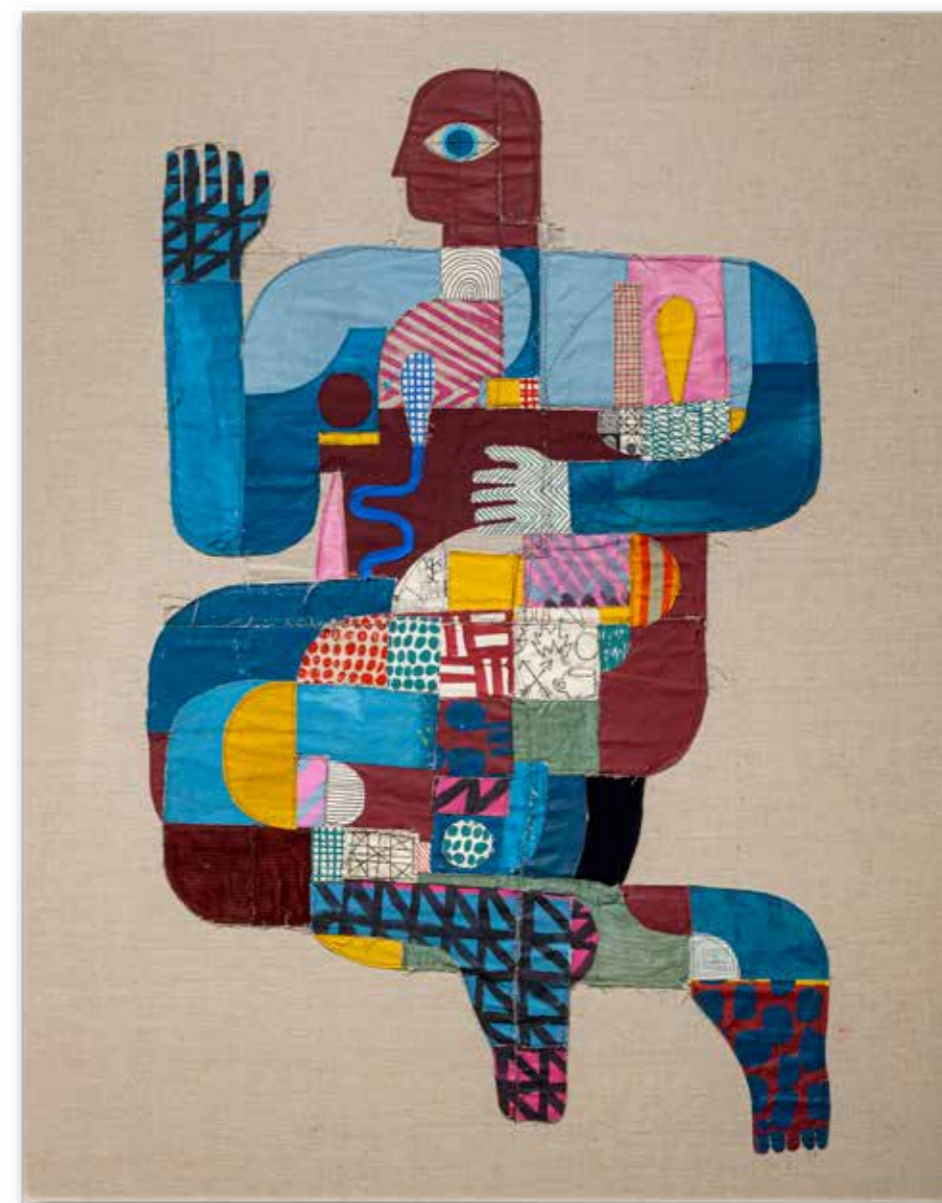
Each of these entities, manifested as faces that radiate with opalescence and shimmering intricacy, carry a distinct and meaningful identity.

In doing so, they challenge the rigid confines of gender, personality, and identity, inviting viewers to embrace a more open-minded and compassionate perspective on humanity.

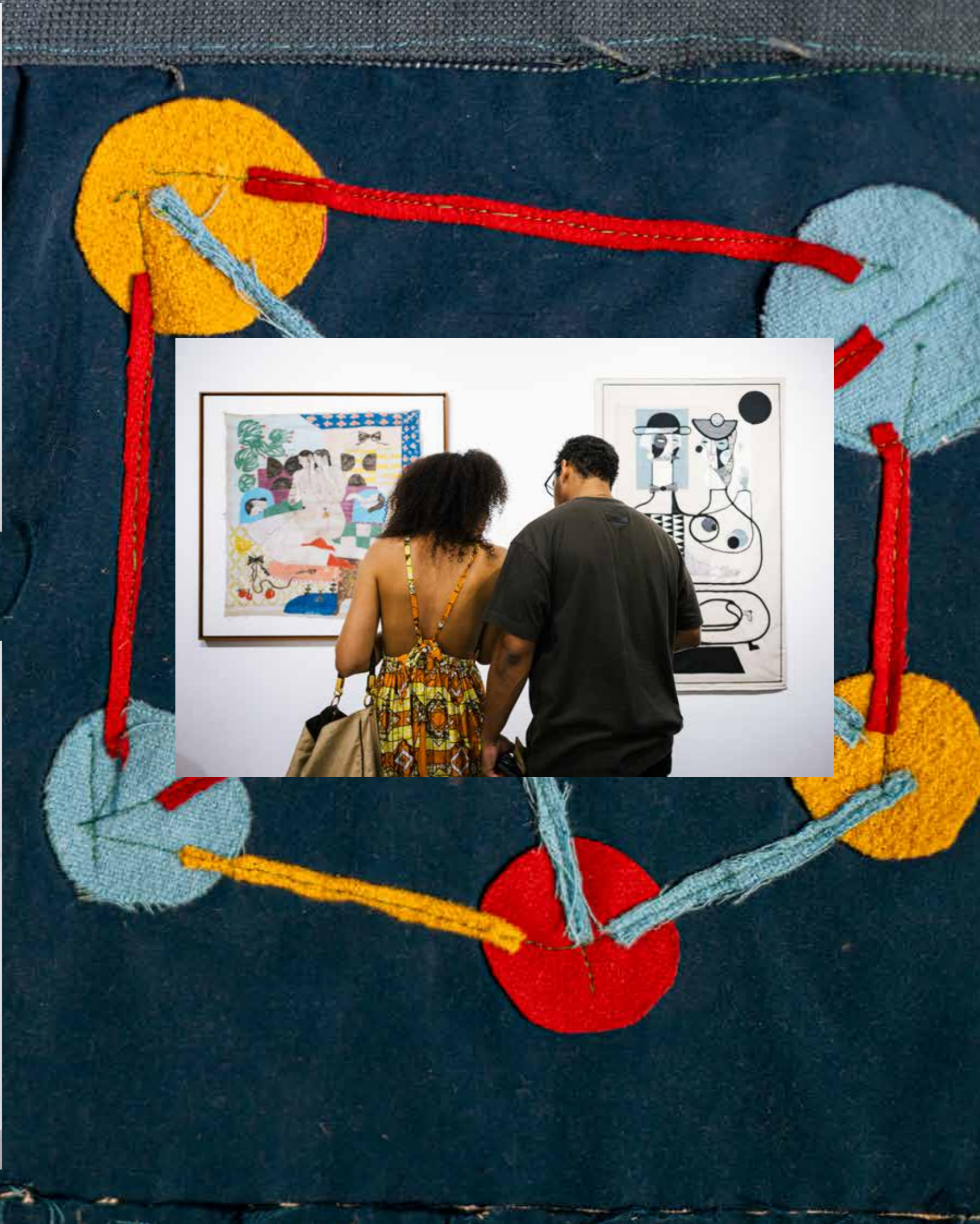
What sets David Shillinglaw's portraits apart is their departure from conventional binary notions of human existence. Instead, they celebrate each individual's complexity and innate beauty, breaking free from the constraints of categorization. Within the gridded confines of his compositions, one can discern subtle hints on migration, displacement, and the experience of otherness, juxtaposed with the concepts of safety and security. Shillinglaw's work reflects on the human condition itself, prompting viewers to contemplate the fluidity and interconnectedness that define our existence.

David's intricate and joyful creations offer a powerful message: the pursuit of an entirely knowable and 'safe' version of ourselves, others, and the world, can lead to narrow-mindedness. True beauty, he suggests, lies in surrendering to the cosmic chaos that envelops us, trusting that behind it all, there exists an exquisite order. Only by fully immersing ourselves in the world, accepting our role as one of its precarious parts rather than its sole author, can we genuinely respect and care for it. Much like David, we must revel in the manifold wonders that this world presents, embracing its sublime mysteries with wild abandon.





David Shillinglaw  
Common Threads :: 2023  
acrylic and textile assemblage on cotton canvas  
140 cm x 110 cm :: €3.500





David Shillinglaw  
Cosmic Fabric :: 2023  
acrylic and textile assemblage on cotton canvas  
138 cm x 181 cm :: €4.800







David Shillinglaw  
Fabric Humanoid I :: 2023  
acrylic and textile assemblage on cotton canvas  
99,5 cm x 77,5 cm :: €1.800

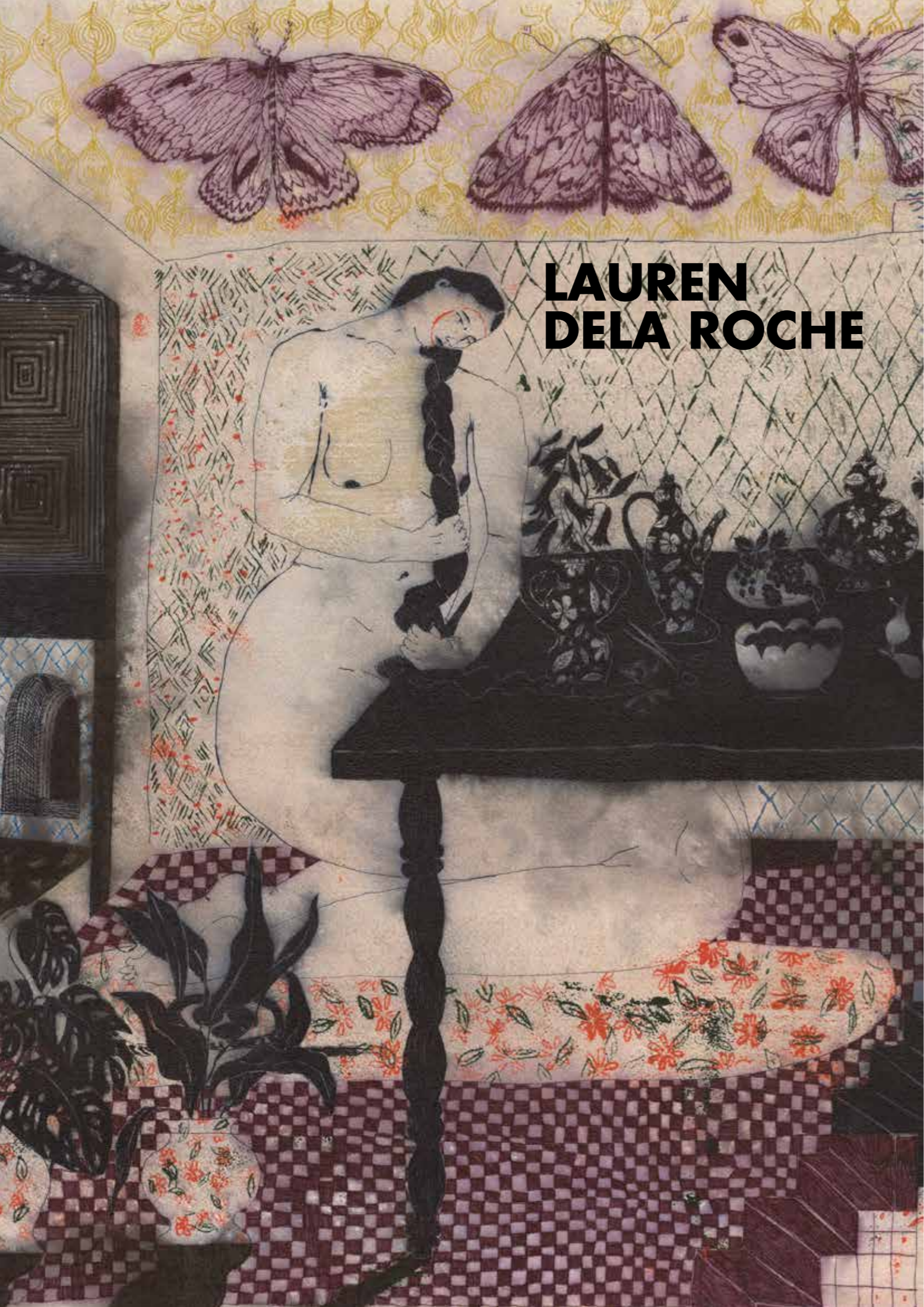


David Shillinglaw  
Fabric Humanoid II :: 2023  
acrylic and textile assemblage on cotton canvas  
99,5 cm x 77,5 cm :: €1.800



David Shillinglaw  
Fabric Humanoid III :: 2023  
acrylic and textile assemblage on cotton canvas  
99,5 cm x 77,5 cm :: €1.800





## LAUREN DELA ROCHE

Lauren dela Roche (b. 1983, Santa Rosa, CA - US) tece as suas experiências psicológicas pessoais numa tapeçaria de criatividade, dando origem a paisagens imaginativas que refletem as profundezas da sua psique. A sua arte torna-se num recipiente para as suas memórias e reviravoltas da vida, mas também estende um convite aos espectadores, oferecendo um vislumbre das suas próprias ansiedades universais. Como explica Dela Roche, “Depois de fazer uma pintura, sinto-me apoiada por ela. Espero que outra pessoa também se sinta compreendida de alguma forma.”

Na sua arte, a presença palpável da sua interioridade única atrai o público para um processo de autointerrogação, esbatendo as fronteiras entre as mitologias pessoais e a mitologia grega. Essa interação entre o particular e o universal revela uma narrativa que sugere consolo e resiliência, mantendo um equilíbrio delicado com elementos imprevisíveis. Essa tensão entre ansiedade e alívio ressoa com a ciclicidade encontrada na mitologia grega, uma fonte de inspiração para Dela Roche.

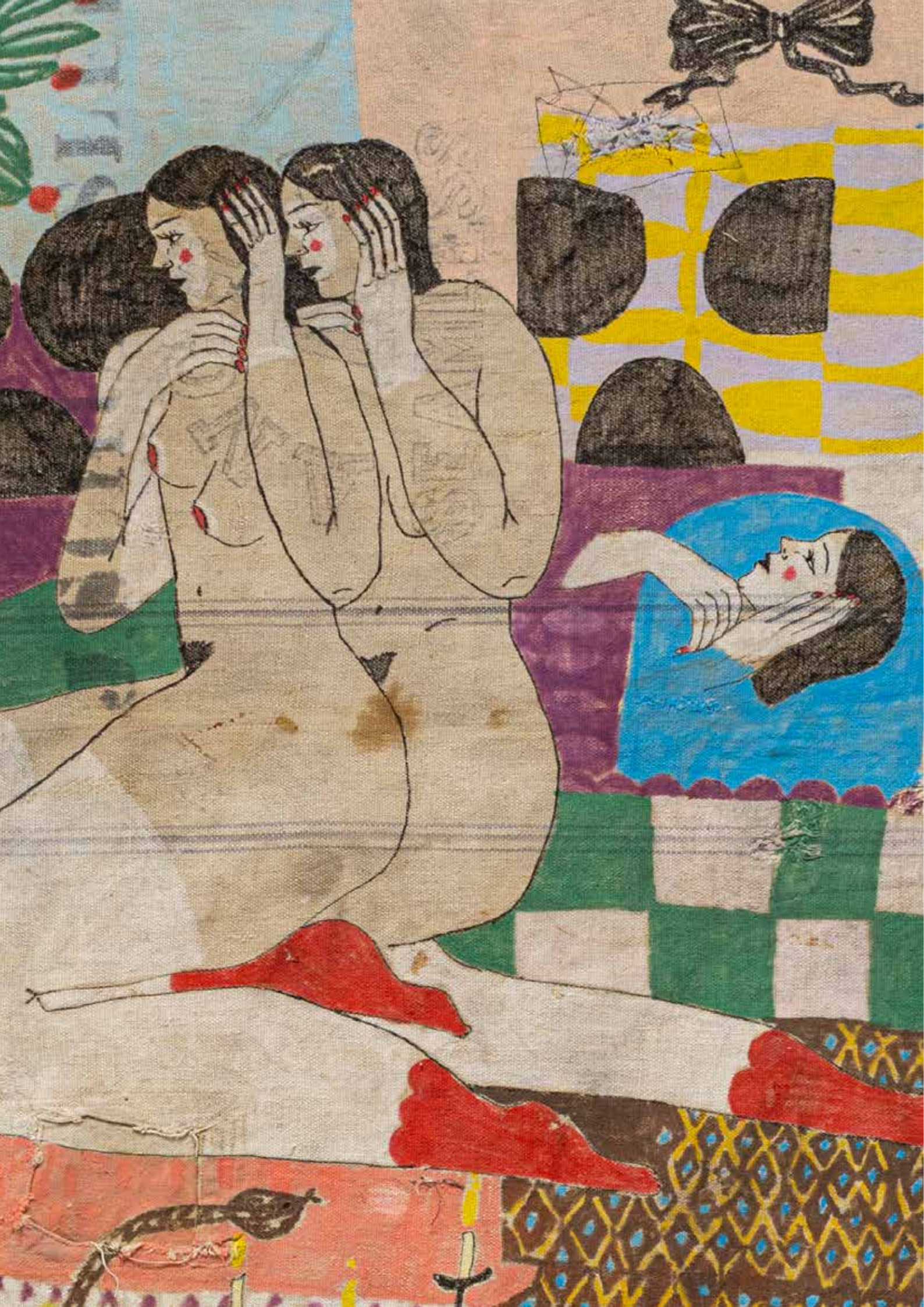
Para esta exposição, Lauren apresenta uma peça notável trabalhada a partir de sacos de grãos em algodão que remontam ao início do século XX. Esses tecidos carregam os traços visíveis dos remendos dos agricultores de uma época passada, simbolizando a resiliência forjada durante os tempos das Guerras Mundiais, a Grande Depressão, a Revolução Industrial, a padronização e o aumento da participação feminina na força de trabalho. O seu trabalho, intitulado “Déjà Vu”, engloba metáforas imaginativas com uma forte essência feminina no seu núcleo. Ele incorpora uma interação dualista de personagens, infundida com inspiração de poesia punk, a literatura de Murakami e a fusão entre a domesticidade e mundos imaginários.

### english

*Lauren dela Roche (b. 1983, Santa Rosa, CA - US) weaves her personal psychological experiences into a tapestry of creativity, giving birth to imaginative landscapes that mirror the depths of her inner psyche. Her artwork becomes a vessel for her memories and life's twists and turns, but it also extends an invitation to viewers, offering a glimpse into their own universal anxieties. As dela Roche explains, “After I make a painting, I feel supported by it. I hope that someone else would feel understood in some way too.”*

*In her art, the palpable presence of her unique interiority draws the audience into a process of self-interrogation, blurring the boundaries between personal mythologies and Greek mythology. This interplay between the particular and the universal unveils a narrative that suggests solace and resilience while maintaining a delicate balance with unpredictable elements. This tension between anxiety and relief resonates with the cyclicity found in Greek mythology—a wellspring of inspiration for dela Roche.*

*For this exhibition, Lauren presents a remarkable piece crafted from feed sacks cotton fabrics dating back to the early 20th century, originally used in agriculture. These fabrics bear the visible traces of mending by farmers from a bygone era, symbolizing the resilience forged during times of World Wars, the Great Depression, the Industrial Revolution, standardization, and increased female participation in the labor force. Her work, titled “Déjà Vu,” encapsulates imaginative metaphors with a strong feminine essence at its core. It embodies a dualistic interplay of characters, infused with inspiration from punk poetry, Murakami's literature, and a fusion of domesticity and dreamworlds.*



Lauren dela Roche  
Déjà Vu :: 2023  
oil colour on cotton woven fabric  
124 cm x 124 cm  
N/A



# THIAGO MOLON

Thiago Molon, nascido em 1990 e criado no Vidigal, icônica favela do Rio de Janeiro (Brasil), é um artista multidisciplinar que atualmente reside e trabalha na sua cidade natal. Formado em Design Gráfico pela PUC-RJ, Molon tece um universo único no seu trabalho, entrelaçando referências estéticas e culturais de sua família e da sua comunidade. A favela do Vidigal tem um papel central na formação da identidade poética, estética e política do artista.

A origem pessoal de Molon, com pais oriundos de diferentes regiões do país, acrescenta profundidade à sua exploração artística e traz uma perspectiva única que enriquece o seu trabalho com um conhecimento significativo do tecido social brasileiro.

Através de uma linguagem moderna, o artista lança luz sobre as complexidades da migração inter-regional e as lutas daqueles que viajam do Nordeste para o Sudeste em busca de melhores condições de vida. Ele serve como uma ponte entre as históricas deslocamentos internos e os seus desafios contemporâneos.

Essencialmente, a sua pesquisa revela a intrincada interação entre arte, história, geopolítica e cultura local, agindo como um catalisador para a reflexão e transformação da sociedade. Thiago retrata o povo brasileiro, enfatizando a riqueza das suas vivências e a beleza da simplicidade, sem deixar de destacar o sofrimento e os desafios enfrentados por aqueles que estão na periferia.

Na exposição "Metamorphosis", a escolha de Molon de utilizar lonas para camiões, que atravessaram incontáveis quilômetros do território brasileiro antes de chegar às suas mãos, torna-se ainda mais emblemática nesse contexto. Esta escolha simboliza a dependência do Brasil nos camiões, um tema explorado pelo artista em obras que evocam bancas de fruta reimaginadas, inspiradas nas vibrantes feiras de rua onde convergem diversas classes sociais.

Os camiões, fundamentais para o tecido social brasileiro, ocupam uma posição central na narrativa de Molon. Facilitam a migração interna, influenciam a distribuição de alimentos e têm impacto na dinâmica econômica, incluindo a inflação.

Em essência, a arte de Thiago Molon serve como uma ponte entre a consciência individual e coletiva, uma jornada que se origina no seu universo singular.





# E R I T A G E

## english

*Thiago Molon (b.1990), born and raised in Vidigal, the iconic favela of Rio de Janeiro, Brazil, is a multidisciplinary artist currently residing and working in his hometown. With a background in Graphic Design from PUC-RJ, Molon weaves a unique universe into his work, interlacing aesthetic and cultural references from his family and the community he hails from. The Vidigal favela plays a central role in shaping the artist's poetic, aesthetic, and political identity.*

*Molon's personal background, with parents hailing from different regions of the country, adds depth to his artistic exploration and brings a unique perspective that enriches his work with a profound understanding of Brazil's social fabric.*

*Through a modern language, the artist sheds light on the complexities of inter-regional migration and the struggles of those who journey from the Northeast to the Southeast in search of better living conditions. He serves as a bridge between historical internal migrations and their contemporary challenges.*

*Essentially, his research unveils the intricate interplay of art, history, geopolitics, and local culture, acting as a catalyst for societal reflection and transformation. Thiago portrays the Brazilian people, focusing on the richness of their experiences and the beauty of simplicity while not shying away from highlighting the suffering and challenges faced by those on the periphery.*

*In the "Metamorphosis" exhibition, Molon's choice to use canvas truck material, which originally traversed countless kilometres of Brazilian territory before reaching his hands, becomes even more emblematic in this context. It symbolizes Brazil's dependence on trucks, a theme explored by the artist in works that evoke a reimagined fruit stall, inspired by the vibrant street fairs where diverse social classes converge.*

*Trucks, integral to Brazil's social fabric, occupy a central position in Molon's narrative. They facilitate internal migration, influence food distribution, and impact economic dynamics, including inflation.*

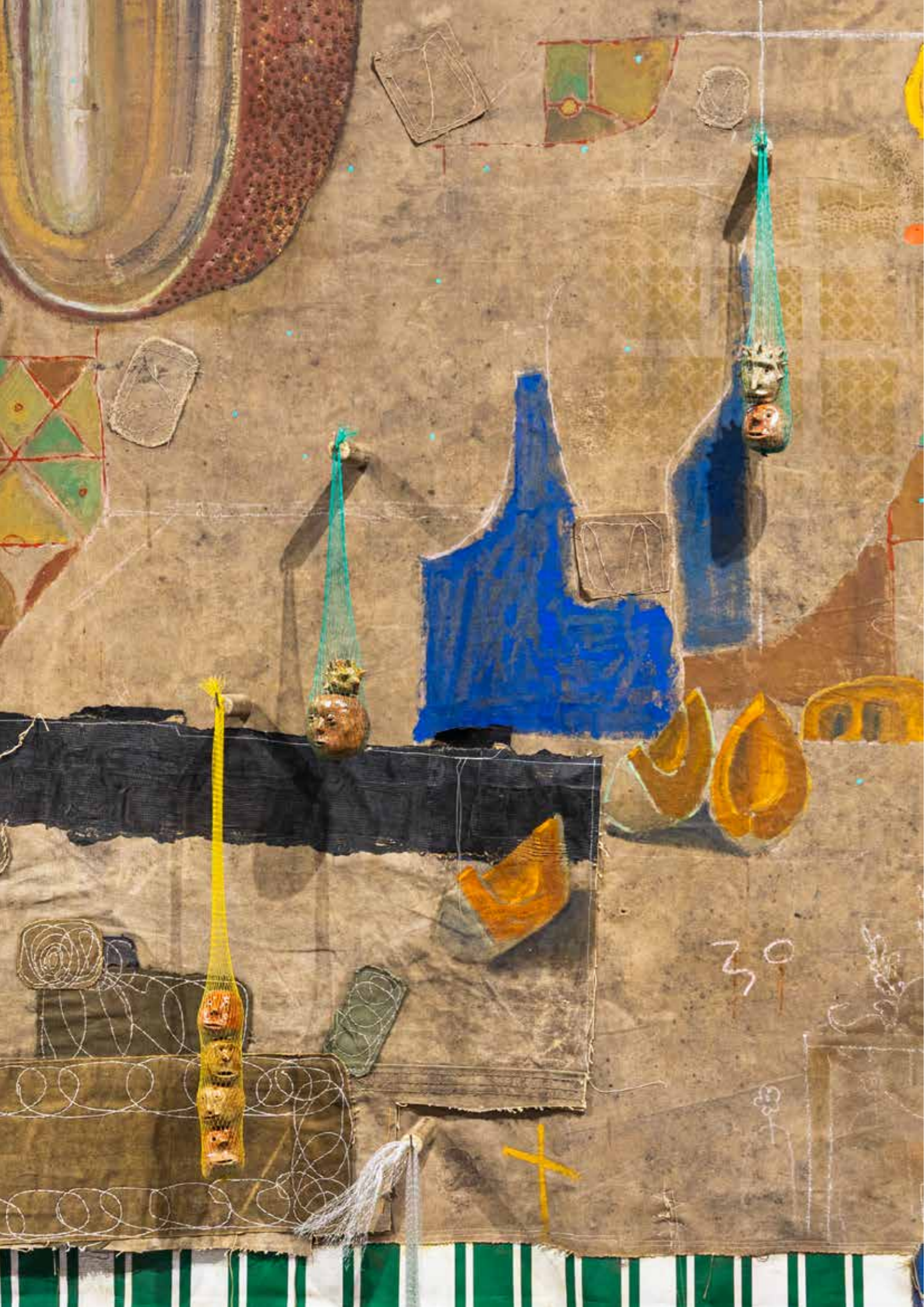
*In essence, Thiago Molon's art serves as a bridge between the individual and collective consciousness, a journey that originates in his singular universe.*





Thiago Molon  
Series: Estruturas Ambulantes :: Viajantes I :: 2023  
oil paint, oil stick, spray paint, chalk and ceramic pieces on truck and awning canvas  
177 cm x 102 cm :: €9.500 (diptych)





Thiago Molon  
Series: Estruturas Ambulantes :: Viajantes II :: 2023  
oil paint, oil stick, spray paint, chalk and ceramic pieces on truck and awning canvas  
174 cm x 191 cm :: €9.500 (diptych)



# LISETTE VAN HOOGENHUYZE

Lisette Van Hoogenhuyze (b.1991) incorpora com mestria nas suas criações influências da mitologia grega e da narração, que abrangem vários meios artísticos, incluindo pintura e têxteis. A sua obra serve como uma exploração evocativa de mitos antigos, dando vida a formas impregnadas de simbolismo profundo através de uma perspetiva contemporânea.

Temas de feminidade e metamorfose ressoam fortemente em todo o seu corpo de trabalho. A sua jornada artística é marcada por um processo contínuo de aprendizagem, uma busca constante para encapsular as culturas e simbolismos transmitidos através de gerações. Através das suas criações, ela pretende transmitir a essência atemporal da vida.

A obra desenvolvida para esta exposição é uma referência ao conto de Narciso, que se apaixonou pelo seu próprio reflexo e faleceu, dando origem no seu túmulo à flor narciso. Dentro das suas obras, os personagens bordados permanecem anônimos, já que a artista coloca ênfase nas narrativas que representam, em vez das personalidades que incorporam.

Como observadores, somos convidados a um reino que transcende a intenção original da artista. Cada um de nós tece a própria narrativa única dentro da tapeçaria da sua arte, fundindo fragmentos de experiências.

## english

*Lisette Van Hoogenhuyze - (b.1991) is a multimedia artist that masterfully weaves influences from Greek mythology and storytelling into her creations, which span various artistic media, including painting and textiles. Her oeuvre serves as an evocative exploration of ancient myths, giving life to forms imbued with profound symbolism through a contemporary perspective.*

*Themes of femininity and metamorphosis resonate strongly throughout her body of work. Her artistic journey is marked by an ongoing process of learning, a continuous quest to encapsulate the cultures and symbolisms passed down through generations. Through her creations, she aims to convey the timeless essence of life itself.*

*The artwork developed for this exhibition is a nod to the tale of Narcissus, who fell in love with his own reflection and perished, giving rise to the narcissus flower on his grave. Within her artworks, embroidered characters remain anonymous, as the artist places emphasis on the narratives they represent rather than the personalities they embody.*

*As observers, we are invited into a realm that transcends the artist's original intent. Each of us weaves our unique narratives within the tapestry of her art, melding fragments of personal experiences with the artwork. This process forges fresh, distinct meanings within the expansive space that art provides, evoking an infinite array of interpretations.*





Lisette van Hoogenhuyze  
Clouds in my coffee :: 2023  
wool, acrylic paint, oil pain and oil stick on burlap  
120 cm x 160 cm :: €5.500





# JOANA GOMES

Joana Gomes (b. 1986, Lisboa) investiga o papel em evolução da mulher na sociedade, oferecendo uma representação pungente através da sua arte. O seu trabalho apresenta uma reflexão sentimental inspirada num fotograma dum filme japonês, "The Only Son", de Yasujiro Ozu, que ela retrata em dois tecidos sobrepostos. Esta composição cria a impressão da passagem do tempo, impregnando o seu trabalho com uma sensação de nebulosidade e visibilidade turva. Joana utiliza lacunas deliberadas dentro das suas peças para marcar o tempo, simbolizando a quebra de padrões e repetições. A sua arte encapsula a essência duma mulher que assume continuamente novos papéis, transcendendo os limites tradicionais da maternidade e das tarefas domésticas. A sua obra exala sensibilidade, sensualidade e sutileza, um testemunho da energia de transformação e do poder da criação, onde a artista enche de vida as próprias criações.

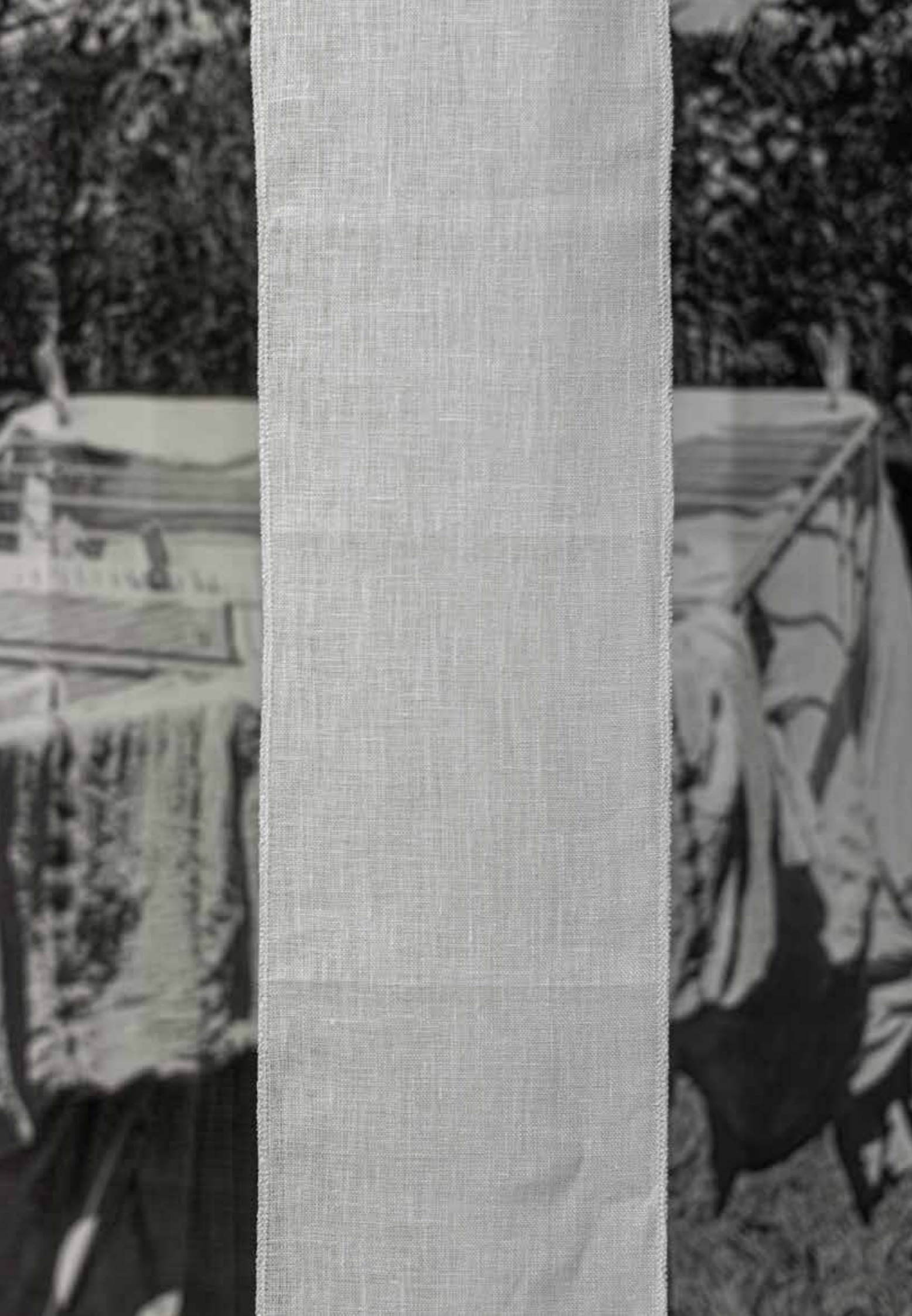
Ao longo do seu percurso artístico, Joana Gomes tem cultivado um corpo de trabalho convincente. As suas obras têm como objetivo narrar histórias entrelaçadas com referências antropológicas, literárias, cinematográficas, filosóficas e pessoais, todas contextualizadas no mundo contemporâneo. A sua abordagem é semelhante a uma narrativa desconstruída, semelhante a uma arqueologia sobre a memória, onde memórias reais se fundem com símbolos do reino da imaginação e experiências coletivas. Joana está consistentemente envolvida numa exploração profunda das relações humanas e da sua interconexão com o universo. Inspira-se em conceitos enraizados na psicanálise e na filosofia, como a estranheza, a dualidade, a multiplicidade, o outro, a coisa e as realidades alternativas. A sua arte serve como espelho reflexivo e instigante da complexa tapeçaria da experiência humana e as nossas intrincadas conexões com o cosmos.

## english

*Joana Gomes (b. 1986, Lisboa) delves into the evolving role of women in society, offering a poignant representation through her art. Her work features a sentimental reflection inspired by a Japanese film frame, notably "The Only Son" by Yasujiro Ozu, which she portrays on two overlapping fabrics. This composition creates an impression of the passage of time, imbuing her work with a sense of fuzziness and blurred visibility. Joana utilizes deliberate gaps within her pieces to mark time, symbolizing the breaking of patterns and repetitions. Her art encapsulates the essence of a woman continually taking on new roles, transcending the traditional confines of motherhood and homemaking. It exudes sensitivity, sensuality, and subtlety—a testament to the energy of transformation and the power of creation, where the artist breathes life into her creations.*

*Throughout her artistic journey, Joana Gomes has cultivated a compelling body of work. Her pieces aim to narrate stories intertwined with anthropological, literary, cinematographic, philosophical, and personal references, all contextualized within the contemporary world. Her approach is akin to a deconstructed narrative, akin to an archaeology of memory where real memories merge with symbols from the realm of imagination and collective experiences. Joana is consistently engaged in a profound exploration of human relationships and her interconnectedness with the universe. She draws inspiration from concepts rooted in psychoanalysis and philosophy, such as the uncanny, duality, multiplicity, the other, the thing, and alternative realities. Her art serves as a reflective and thought-provoking mirror into the complex tapestry of the human experience and our intricate connections with the cosmos.*





**Joana Gomes**

**As mil tarefas invisíveis :: 2023**

mixed technique of painting and digital photography on  
Japanese kozopaper on raw linen and 7 strips of white linen  
170 cm x 150 cm :: price under request





